

GLOMAR // OFFSHORE



GLOMAR//WORKER **DPII ROV/DIVING SUPPORT VESSEL**

Vessel Purchased by Glomar Group in May, 2019

GLOMAR

Het Nieuwe Diep 34 A3
1781 AD Den Helder, The Netherlands
T // +31 (0)223-525030 F // +31 (0)223-683372
chartering@glomaroffshore.com // glomaroffshore.com



GLOMAR//WORKER

DP2 ROV/Diving Support Vessel

Glomar Worker is a Conan Wu design multi-purpose vessel, DP2, equipped with one AHC offshore crane and with accommodation for 46 persons.

The vessel is designed for worldwide, deep water operations to fulfill the following duties:

- Deepwater precision lifting and installation up to 2,100m;
- ROV- and Diving operations; UXO support
- Survey operations;
- Floatel support

MAIN PARTICULARS

- LENGTH BETWEEN PP: 58.70 M
- BREADTH MOULDED: 15.60 M
- DEPTH: 6.00 M
- DRAFT (MIN/MAX): 3.50 M / 5.00 M
- DEADWEIGHT AT MAX. DRAFT: 1,413 T
- GROSS TONNAGE: 1,969 UMS

- IMO 9344227
- Flag: Panama

Capacities & Delivery Rates

Deck area:	377 m ² @ 5t/m ²
	Mezzanine deck 120 m ² @ 5t/m ²
Deck cargo:	300t @ 0.9 m above deck
Fuel oil:	612m ³ —60m ³ /h @ 7 bars
Drill or water ballast:	151m ³ —150m ³ /h @ 7 bars
Antiheeling:	226m ³ —150m ³ /h
Fresh water:	427m ³ —150m ³ /h @ 7 bars

Accommodations

Accommodations for:	44 persons
Single cabins:	6
2 men cabins:	19
Offices/Hospital:	4/1
Gym and Relaxation/Game room:	1

Miscellaneous

Diving LARS reces at Portside	
Container storage underneath mezzanine deck including rails to slide	
ERN number:	99,99,99,99,& 89

Machinery & Performance

Main propulsion:	2 x 1,200 kW CP Azimuth thrusters
Bow thrusters:	3 x 400 kW CP Tunnel
Main generators:	4 x 320 kW - 440V
Auxiliary generators:	2 x 625 kW - 440V (Shaft Generator)
Emergency generator:	1 x 60 kW - 440V
Consumption (DP)	7,5 cubes/day
Consumption (eco speed)	10 knots – 8 cubes/day
Consumption (full speed)	12 knots - 15 cubes/day
Consumption (port)	1 cube/day
Consumption (survey)	4 knots - 4.5 cubes/day



Equipment & Electronics

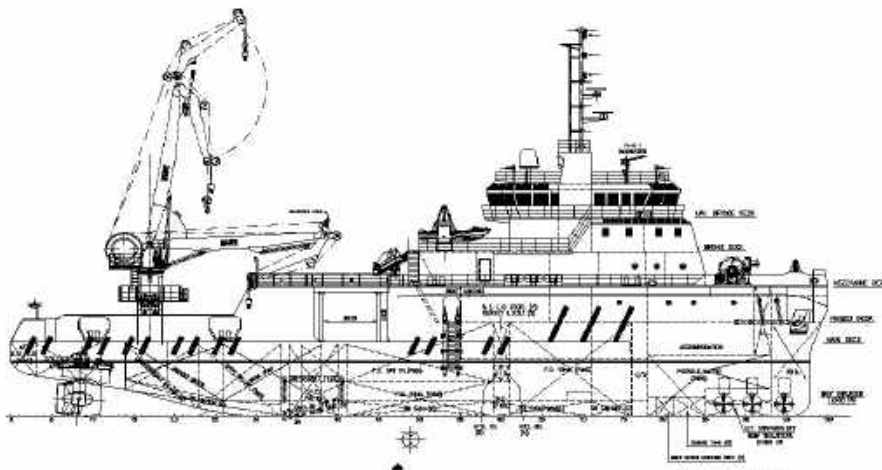
Deck air supply:	7.5 bar
Deck power supply:	Current: 2 x 400 kW - 440 V
Crane:	SMST Active Heave Compensated
	DAF 1.2 - 24 t @ 10.5 m - 8 t @ 19 m
	DAF 1.6 - 12 t @ 13.5 m - 6 t @ 19 m
Main Winch:	12 t / 7 t - 2,300 m - AHC - Man Riding
FiFi:	Class 1
FRC:	Diesel waterjet FRC rescue/workboat at Portside



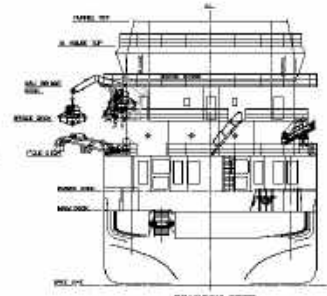
Dynamic Positioning

Manufacturer:	Kongsberg Kpos 21—new version
Type:	DP2
Reference 1:	DGPS 1 Thales Aquarius
Reference 2:	DGPS 2 Thales Aquarius
Reference 3:	Cyscan Laser Reference System
Reference 4:	Computers Ranger 2
	Transducer Ranger 1
Reference 5:	Taut wire

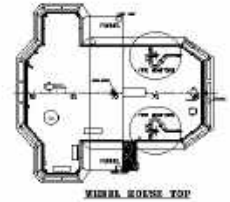




OUTBOARD PROFILE



TRAINING DECK



WHEEL HOUSE TOP



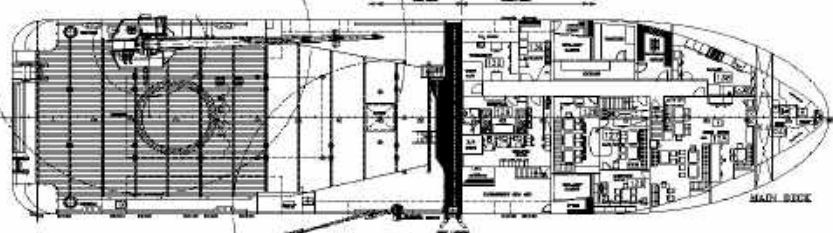
MEZZANINE DECK



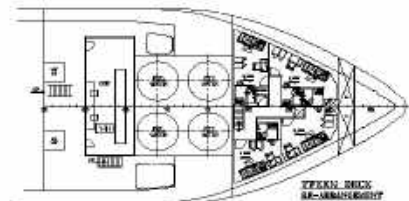
BRIDGE DECK



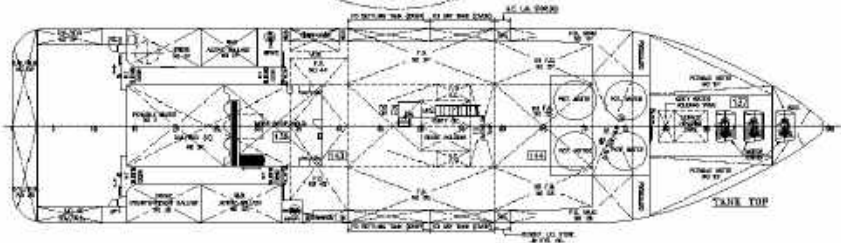
WHEEL HOUSE



MAIN DECK



FOREPEAK DECK



TANK TOP



INTERCOM.			
POSITION	NO	POSITION	NO.
WHEELHOUSE FWD CONSOLE	100	HOSPITAL	126
WHEELHOUSE AFT CONSOLE	101	GALLEY	136
WHEELHOUSE AFT PS OFFICE	148	WORKSHOP	130
WHEELHOUSE AFT SB OFFICE	149	LAUNDRY	136
CAPTAIN'S CABIN	102	ENGINE CONTROL ROOM	141
CHIEF ENGINEER'S CABIN	103	B.T. NO.1&2 COMPARTMENT	137
CHIEF MATE CABIN	106	B.T. NO.3/BOSUN STORE	150
MU ROOM	121	ENGINE ROOM FWD SB	144
MESS	125	ENGINE ROOM AFT SB	143
MEETING ROOM	126	ENGINE ROOM WORKSHOP	135
DAY ROOM	127		
RECREATION ROOM	128		

TANK CAPACITY	
F.O. TANK	500m ³ (APPROX)
POTABLE WATER	320m ³ (APPROX)
DRILL WATER	220m ³ (APPROX)
FOAM TANK	18m ³ (APPROX)
DISPERSANT TANK	5m ³ (APPROX)
SEWAGE TANK	10m ³ (APPROX)
GREY WATER HLDG TANK	5m ³ (APPROX)

PRINCIPAL PARTICULARS	
LENGTH O.A.	50.00m
LENGTH W.L.	58.70m
BEAM MLD.	15.80m
DEPTH MLD.	8.00m
SCANTLING DWFT.	4.80m
DRAFT DESIGNED	4.50m
COMPLEMENT	46 PERSONS
DECK AREA	≈ 350m ²
MEZZANINE AREA	≈ 120m ²
MAIN DECK STRENGTH	5t/sqm
MEZZ DECK STRENGTH	5t/sqm

Order No.	2019.C.M.M.31
Subject	MV GLOWAR WORKER
GLOWAR WORKER General Arrangement	
Scale	1:200
Sheet	1 of 1

MEDESA
MARINE ENGINEERING & DESIGN

